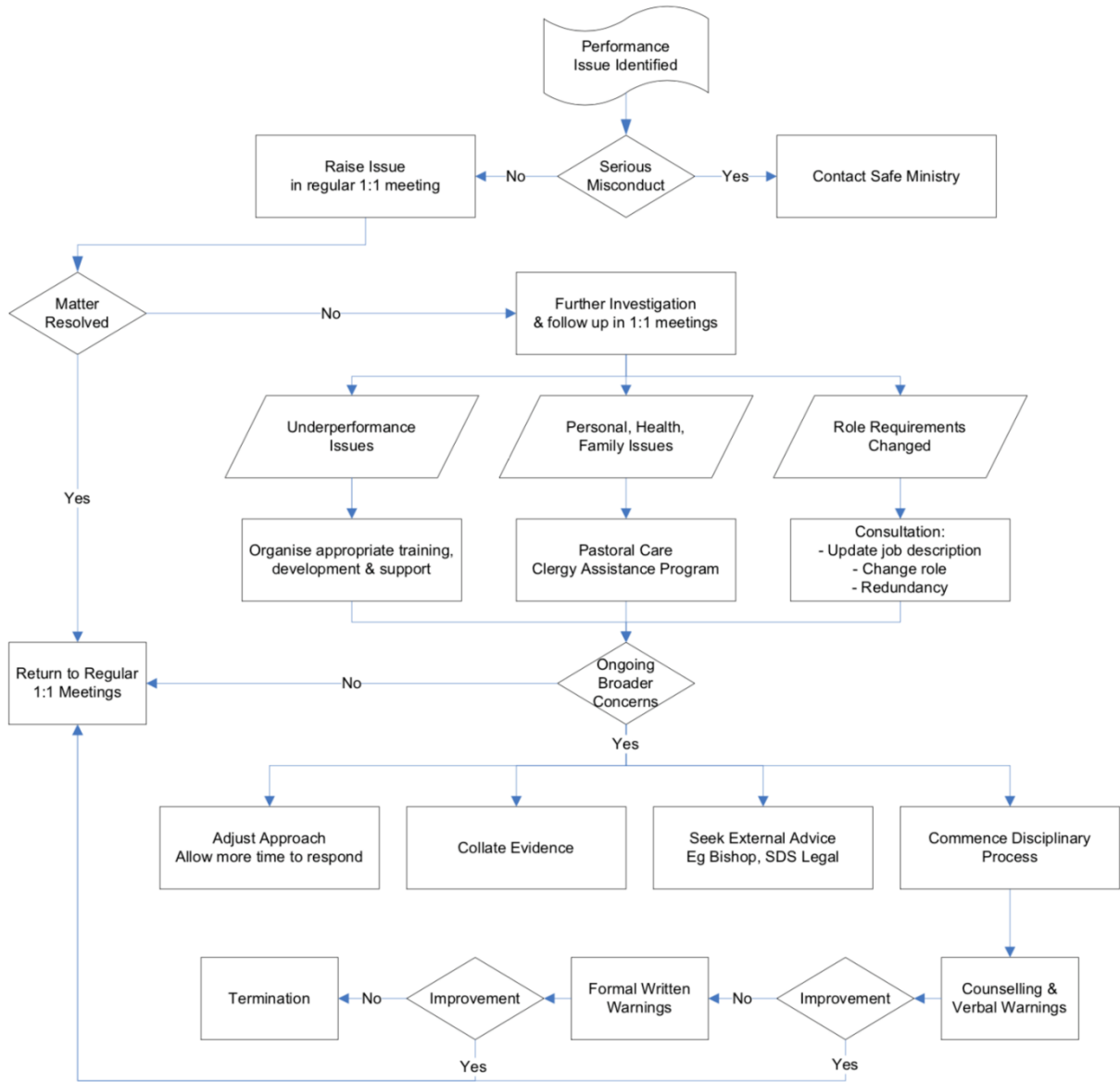


## FRAMEWORK FOR MANAGING UNDER-PERFORMANCE



For certain categories of staff there may be additional mandatory actions you are required to complete under the Award or Ordinance, etc that applies to them.

The processes suggested above represent ways to address issues that are ultimately loving for those concerned, however you are encouraged to seek legal advice regarding each specific situation.